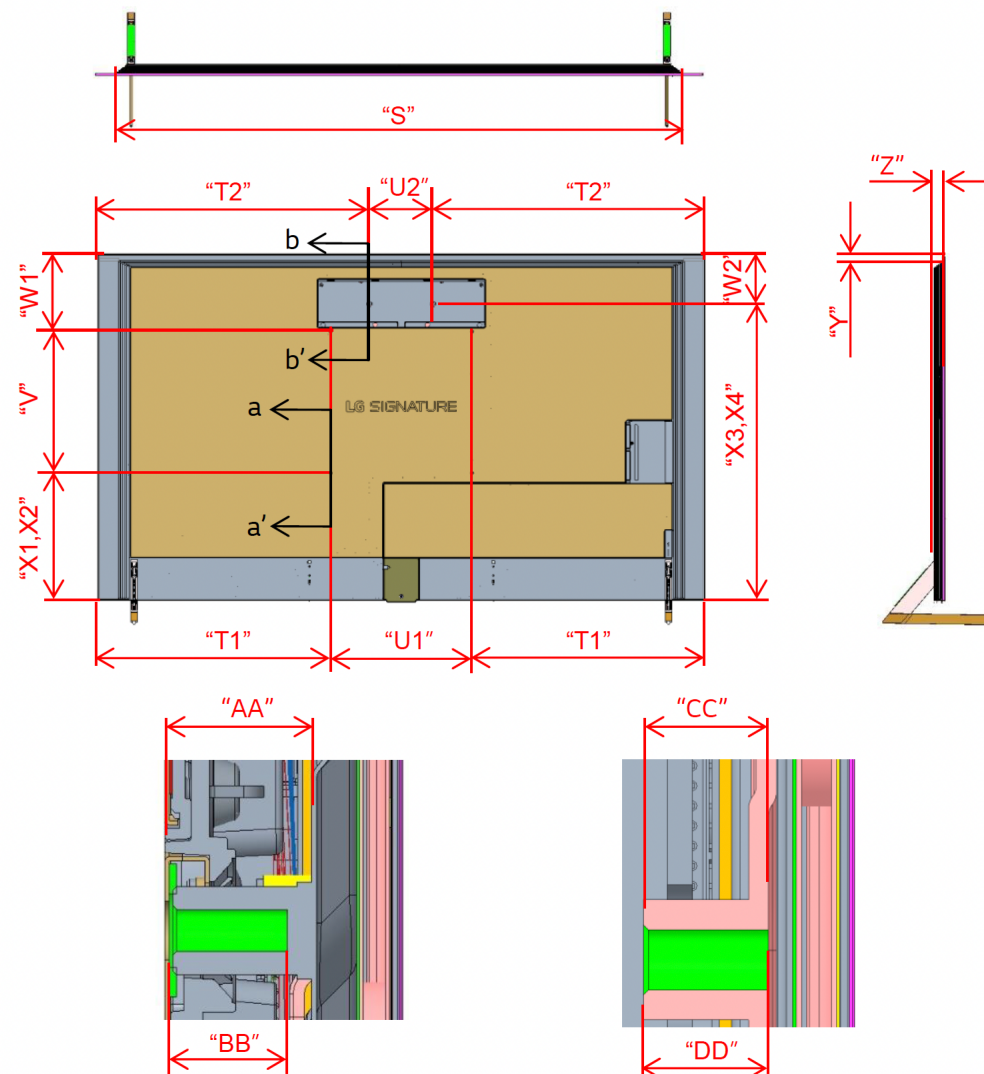


## 2. Line Drawing

## 2-1-2. Back &amp; Side view

Back & Side (UNIT: mm)	77 inch
S (L/R side end of 2 <sup>nd</sup> step)	1602
T1 (HEAD, L/R side ~ VESA Hole center)	659
T2 (HEAD, L/R side ~ Wall Closed Hole center)	769
U1 (VESA horizontal length)	400
U2 (Wall Closed horizontal length)	180
V (VESA vertical length)	400
W1 (HEAD, top side ~ VESA Hole Center)	219
W2 (HEAD, top side ~ Wall Closed Hole Center)	142
X1 (Head, bottom side ~ VESA Hole center)	366
X2 (Head, lowest part ~ VESA Hole center)	360
X3 (Head, bottom side ~ Wall Closed Hole center)	843
X4 (Head, lowest part Wall Closed Hole center)	837
Y (Upper side of SET ~ Top side end of 2 <sup>nd</sup> step)	18
Z (the front of SET ~ Back side of 1 <sup>st</sup> step on B/C)	32.2
AA (VESA joint depth, including B/C thickness)	20.5
BB (VESA Bracket, Screw tap depth)	15.5
CC (Wall Closed joint depth, including B/C thickness)	12.5
DD (Wall Closed Bracket, Screw tap depth)	12.5



All of our products and prices include delivery to you home